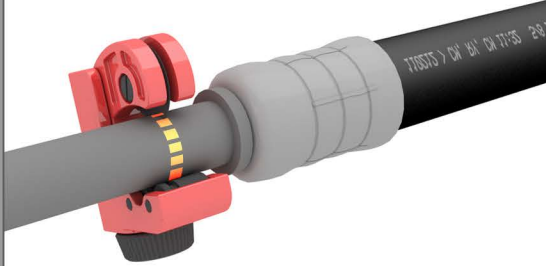


1



Remove the stock lines from the truck

2

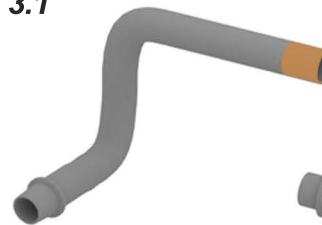


Layout the line so as to note the orientation of the bends to aid in reassemble. Using a mini pipe cutter, cut the steel line as close to the crimp as possible, removing the crimped rubber line.

3

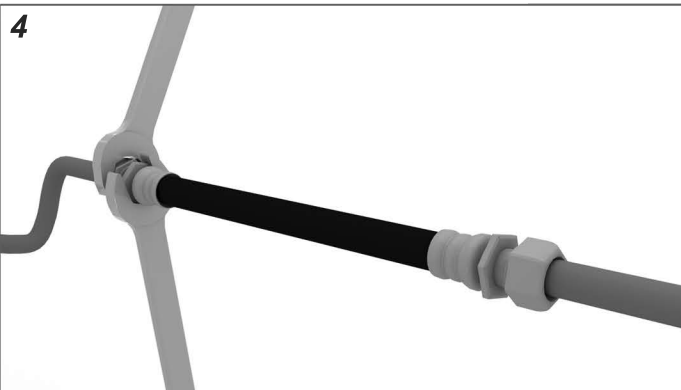


3.1



The cut ends of the steel line need to be deburred before installing the repair kit. A piece of scotch bright or emery paper works well for this, as well as removing any light surface debris.

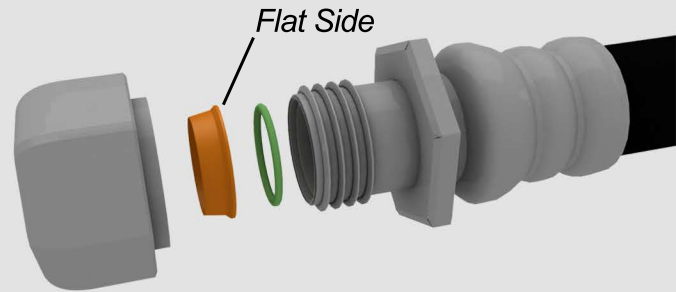
4



With the steel lines clean and deburred, put a small amount of oil on the end of the line before sliding the repair line fitting over the steel line. Check fittings for proper assembly. With fitting loose, slide the fitting over the tube until it bottoms out. Tighten the nut on the repair line fitting until you can no longer turn the steel line in the fitting. After lining up the orientation of the line as noted in step 2, you can tighten the other side.

Be sure to install cooler lines back into all factory locating clamps to avoid rubbing on suspension or other components

TRANSMISSION LINE REPAIR KIT



** Disassemble fittings and check that the ferrules and o-rings are installed properly.*